

Stockholder Of Din Pn10 Sockolet, Copper Nickel Sockolet Exporter in India, Alloy 20 Sockolet Traders In India, ASTM A182 SS Sockolet, Alloy Steel Welding Outlets, Inconel 600 Sockolet

Stockist Of Stainless Steel Sockolet, Raised Faced Sockolet Dealer In India, Ansi B16.11 Sockolet, ASME B16.11 Sockolet, Asme B16.11 Class 150 Sockolet Dimension

Best Deal Of Duplex Steel Sockolet, Hastelloy C22 Sockolet, Alloy Steel Blind Sockolet, Nickel Alloy 200 Sockolet, Manufacturer Of Sockolet, Carbon Steel Sockolet, Mss Sp-97 Sockolet In India

**Sockolet** is the most popular branch connection: the branch is made by welding the item to the outlet of the run pipe. The ends of a **Sockolet** are bevelled to facilitate the welding process, and for this reason **Sockolet** belong to the family of butt weld fittings.

**Fivebros forgings Pvt LTD.** Is One Of The Largest **Manufacturer Of Sockolet in India.** **SS ASME B16.11 Sockolet** has excellent resistance to chloride-ion stress-corrosion cracking, and as well shows appropriate resistance to a number of oxidizing environments. **ANSI B16.11 Sockolet** is very much resistant to chemical corrosion and oxidation (corrosion resistant), and has some high stress-rupture effectiveness and low creep rates under high stresses at temperatures after suitable heat treatment. Our **ASTM A182 Sockolet** are accessible to our valuable customers in different range of diameters (d), wall thicknesses (w) and sizes (nom. Pipe Size) in customized form (as per customer requirement or order) and also at quite affordable rates (Best Price In India). Meanwhile, we offer different types of these fitting such as [We Manufacture And Supply Sockolet In Other Materials Like :] **Stainless Steel 304 Sockolet**, Inconel 625 Sockolet, **Carbon Steel Sockolet**, **Alloy Steel Sockolet**, etc.

ASME B16.9 Sockolet Manufacturers

### Standard Specification of Sockolet

**Dimensions :** ASME 16.11, MSS SP-97, BS 3799

**Size :** 1/2" to 24"

**Pressure Class :** 3000 LBS, 6000 LBS, 9000 LBS

**Form :** Welding Outlets, Welding Olets.

### What is Sockolet

**Sockolet** is the most popular branch connection: the branch is made by welding the item to the outlet of the run pipe. The ends of a **ASTM A105 Sockolet** are bevelled to facilitate the welding process, and for this reason **Sockolet** belong to the family of butt weld Fittings.

### Manufacturing Standards of Sockolet

**ASTM A182** – ASME SA182 – Standard Specification for Wrought Austenitic Stainless Steel Piping Fittings

**ASME B16.11** – Forged Fittings Socket – Welding and Threaded

**MSS SP-97** – Integrally Reinforced Forged Branch Sockolet – Socket Welding, Threaded and Buttwelding End

### Material & Grades of ASME B16.9 Sockolet :

#### Stainless Steel Sockolet :

ASTM A 182, A 240 F 304, 304L, 304H, 316, 316L, 316Ti, 310, 310S, 321, 321H, 317, 347, 347H, 904L

#### Duplex & Super Duplex Steel Sockolet :

ASTM / ASME A/SA 182 F 44, F 45, F 51, F 53, F 55, F 60, F 61

#### Carbon Steel Sockolet :

ASTM / ASME A/SA 105 ASTM / ASME A 350 , ASTM A 181 LF 2 / A516 Gr.70 A36, A694 F42, F46, F52, F60, F65, F706

**Low Temperature Carbon Steel Sockolet :** ASTM A350, LF2, LF3

#### Alloy Steel Sockolet :

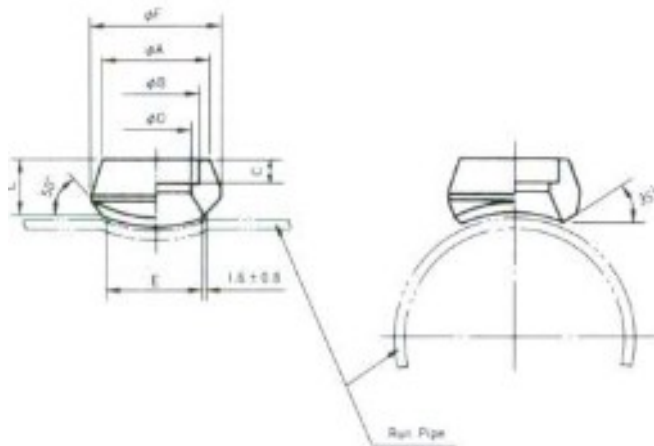
ASTM / ASME A/SA 182 & A 387 F1, F5, F9, F11, F12, F22, F91

**Copper Alloy Steel Sockolet :** ASTM SB 61 , SB62 , SB151 , SB152 UNS No. C 70600 (Cu-Ni 90/10), C 71500 (Cu-Ni 70/30), UNS No. C 10100, 10200, 10300, 10800, 12000, 12200

**Nickel Alloy Sockolet :**

ASTM SB564, SB160, SB472, SB162 Nickel 200 (UNS No. N02200), Nickel 201 (UNS No. N02201), Monel 400 (UNS No. N04400), Monel 500 (UNS No. N05500), Inconel 800 (UNS No. N08800), Inconel 825 (UNS No. N08825), Inconel 600 (UNS No. N06600), Inconel 625 (UNS No. N06625), Inconel 601 (UNS No. N06601), Hastelloy C 276 (UNS No. N10276), Alloy 20 (UNS No. N08020)

**Sockolet Dimensions:**



**Olets Branch Connection – Sockolet Dimensions**

Nominal Pipe Size	Socket (C) Minimum	Face to Crotch (L)	
		3000 Lbs	6000 Lbs
1/8"	10	10	–
1/4"	10	10	–
3/8"	10	13	–
1/2"	10	16	24
3/4"	13	16	25
1"	13	22	29
1 1/4"	13	22	30
1 1/2"	13	24	32
2"	16	24	37
2 1/2"	16	25	–
3"	16	30	–
4"	19	30	–

**General notes:**

- Dimensions: Top Row in Inches / Bottom Row in millimeters.
- Root Gap - X - "Space" for welding the O'let is raised off the run pipe to establish proper weld gap by placing spacers, e.g. welding rods, under the fitting. This provides a uniform welding gap between the curvature of the run and base of fitting.
- L = Dimensions Center Line of Run Pipe + X (Root Gap) + A (height of Sockolet).
- Bevelled Ends ASME B16.9 and B16.25.